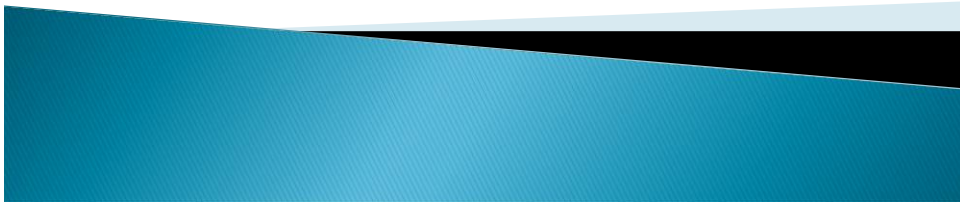


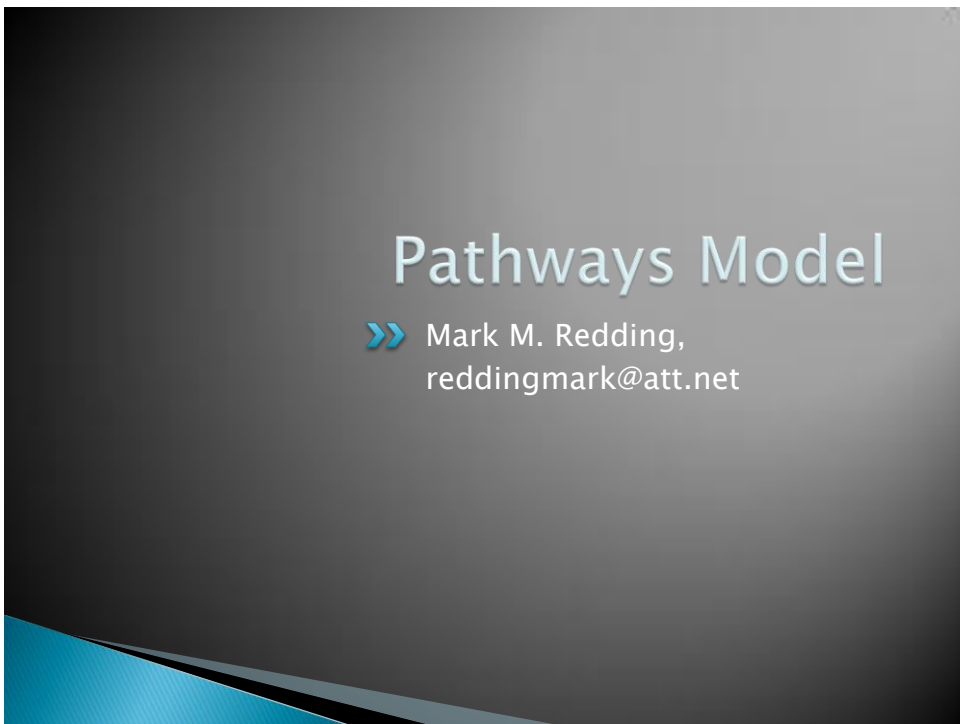
# PartnerSHIP for a Healthy Community

Thursday, June 17, 2010



## Pathways Model

» Mark M. Redding,  
reddingmark@att.net

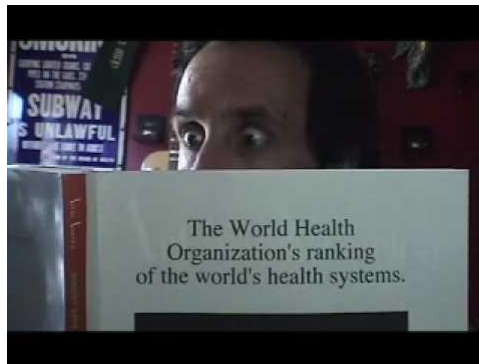


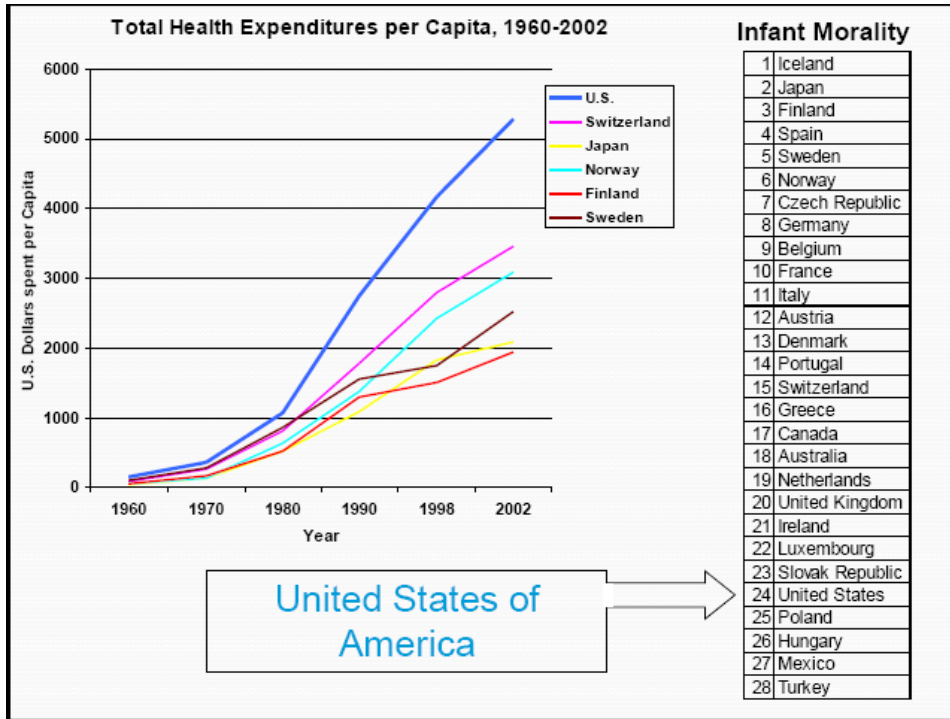


# Cultural Connection



U.S.A. - We're # 37





## Why focus on at risk?

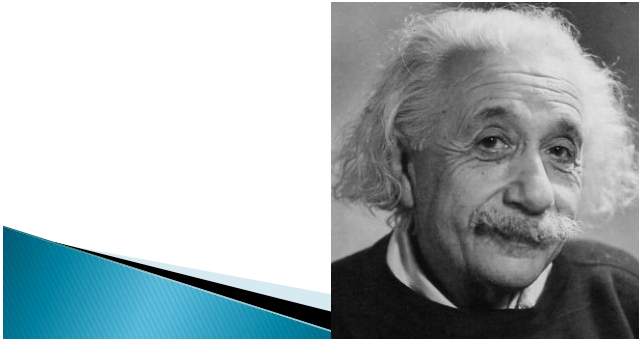
**An at risk individual is less likely to connect to primary care and prevention than 10 years ago and the health care budget has tripled**

**5% of Population = 50% of the cost.....and**



# Albert Einstein

*"We can't solve today's problems using  
the same kind of thinking we used  
when we created them"*



## Pathways Model

1

Find at Risk



2

Treat

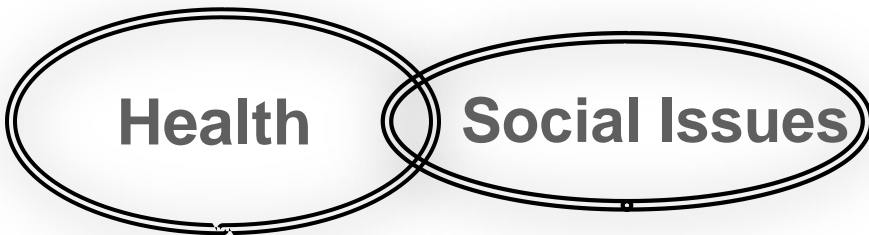
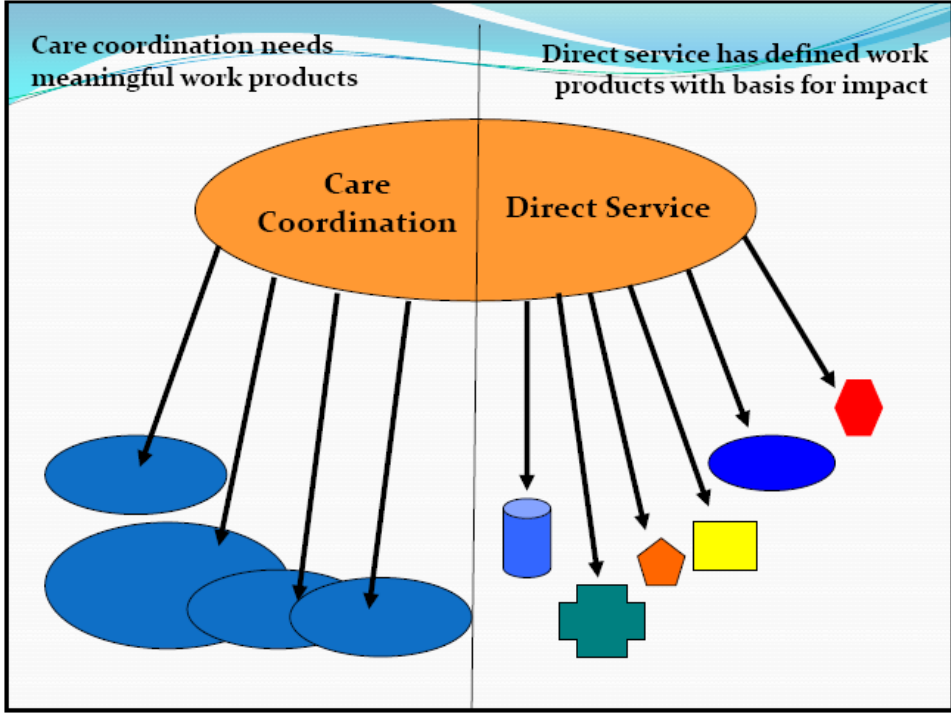


3

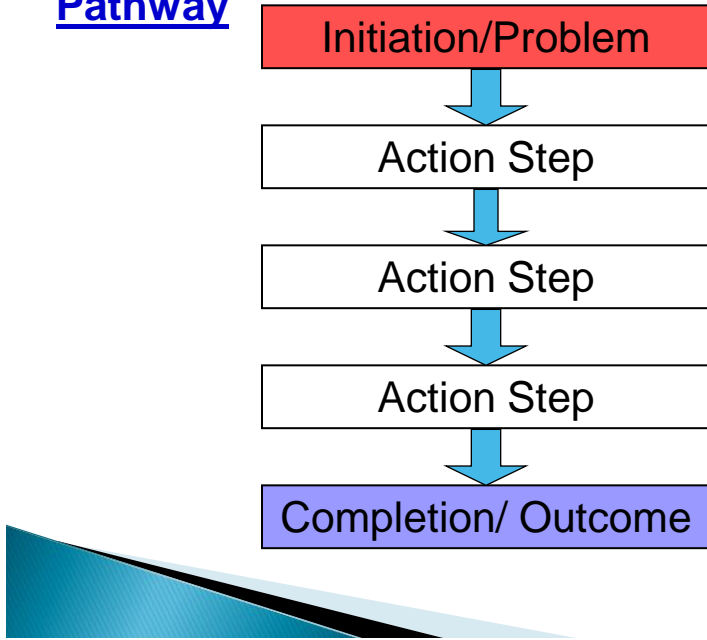
Measure



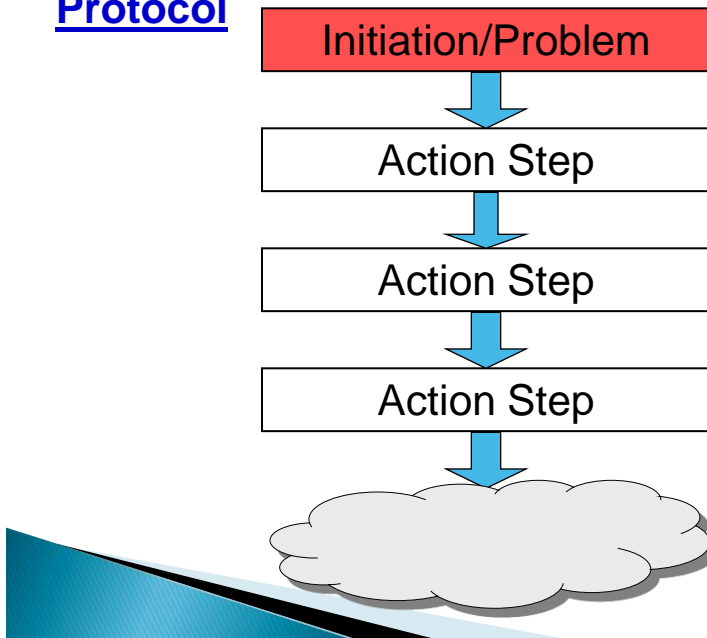




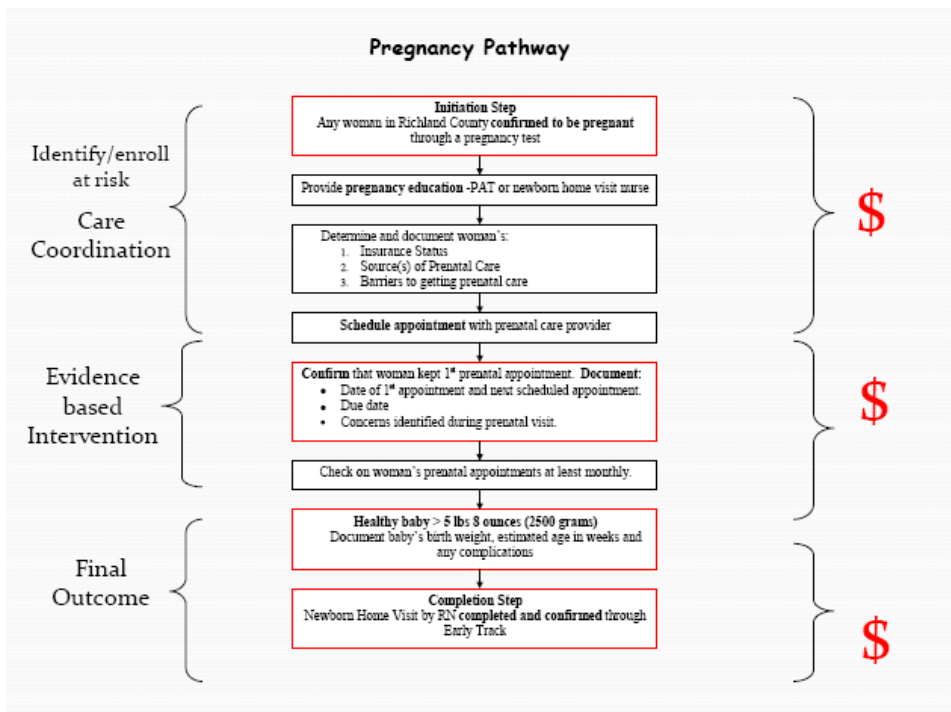
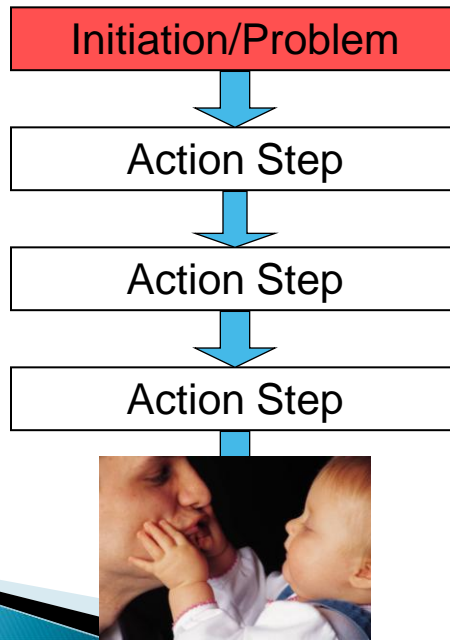
**Pathway**

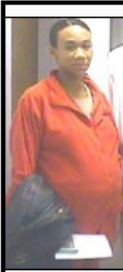


**Protocol**



**Pathway**

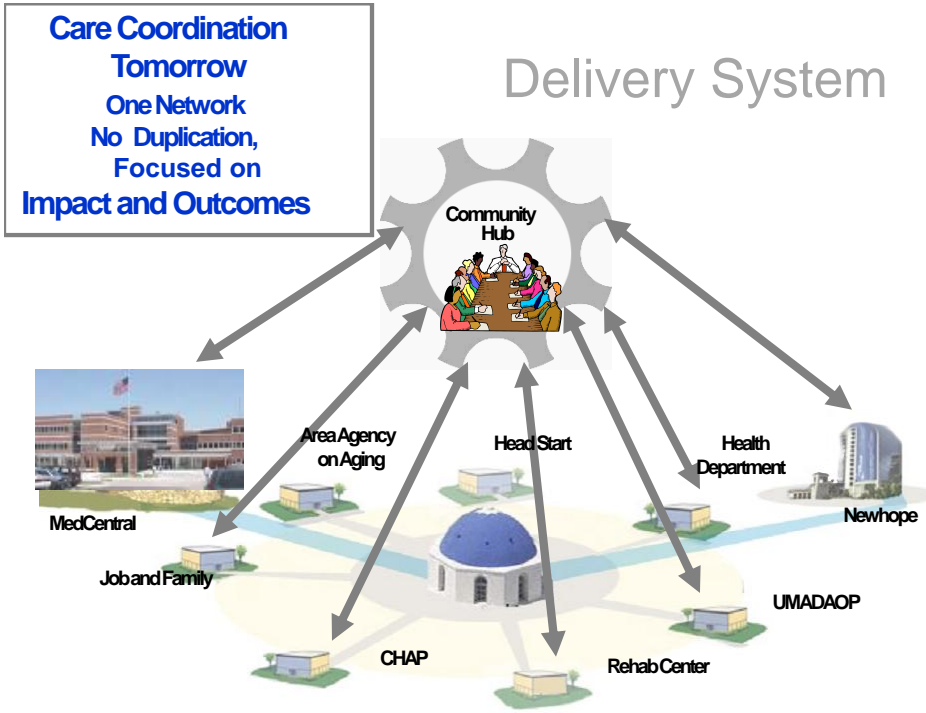




Problem List	Interventions	Measures
1. At risk Pregnancy →	Prenatal Care →	Healthy Baby
2. Smoking →	Cessation Program →	Cut back smoking
3. Homeless →	Housing →	Permanent housing
4. Depression →	Behav Health Tx →	Score Improved
5. Needs GED →	Education →	Has GED
6. Domestic Violence →	DV - Intervention →	Safety Confirmed

## Care Coordination

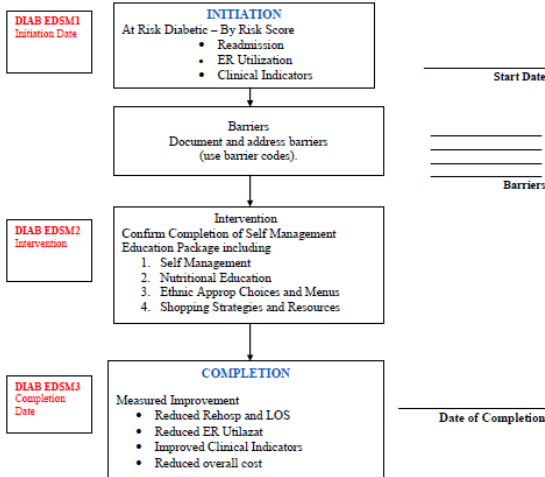


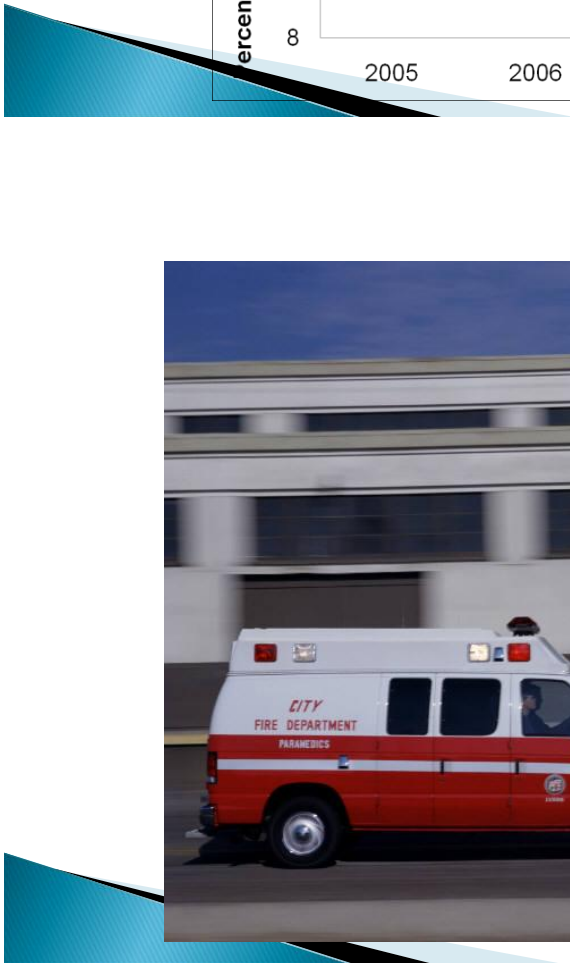
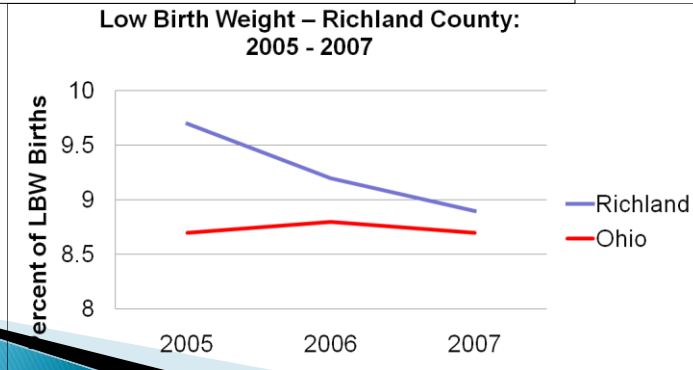
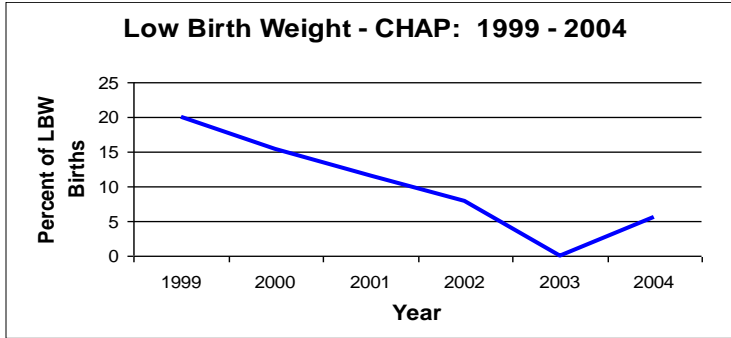


Client Name \_\_\_\_\_  
 Date of Birth \_\_\_\_\_  
 Care Manager \_\_\_\_\_

### Partnership for a Healthy Community

#### Diabetes Self Management Education Pathway





# CDC MMWR

## Small Pox Irradication – Lessons from the Past

**D.A. Henderson MD**

December 31, 1999 / 48(SU01);16-22

I see these approaches as key steps in revolutionizing and revitalizing public health. Implicit in these new approaches is the setting of measurable goals and a willingness to look at all alternative methods for achieving them without assuming, as we so often have, that every intervention, every vaccine, every drug must somehow be directed or dispensed by some sort of primary health center.

